

MULTI-USER BBS

... for the IBM PC, XT, AT, and compatibles.

Audit Trail		Users					
19:56	01/03/87	CHANNEL 05	(0)	(0)	(0)	(0)	
CREDITED	Bhsuser	211768 (PAID)	0	Tiponeill	000000	000000	000000
03:06	01/04/87	3AM CLEANUP	1	Ozone	000000	000000	000000
DELETED	Freebie	(Cr: 0)	2	SIGN-UP	000000	000000	000000
09:08	01/04/87	MAIN CONSOLE	3	Lori	000000	000000	000000
DELETED	Pestyuser	(Cr: 0)	4	LOG-ON	000000	000000	000000
09:16	01/04/87	CHANNEL 07	5	Rmcnamara	000000	000000	000000
XF 10600	Stryker->	Ozone	6	Majik	000000	000000	000000
09:31	01/04/87	MAIN CONSOLE	7	Stryker	000000	000000	000000
CREDITED	Jhond	36000 (PAID)	8		000000	000000	000000
09:32	01/04/87	MAIN CONSOLE	9		000000	000000	000000
CREDITED	Rmcnamara	18000 (FREE)	A		000000	000000	000000
			B		000000	000000	000000
			C		000000	000000	000000
			D		000000	000000	000000
			E		000000	000000	000000
			F		000000	000000	000000

monitor	send	09:35 01/04/87 UsedYTD: 84 hr #accnts: 1553 #paying: 402
display	post	
detail	set msg	
emulate		
analyze	kill	

Commands
display number of paying accounts, in position 3
post 36000 PAID credits to User-ID: Jhond
post 18000 FREE credits to User-ID: Rmcnamara
emulate channel no. 3

Mainframe capability on a micro. It had to happen eventually. And it has. Operate your own multi-user Bulletin Board System for 8, 16, 32, even as many as 64 users at once. With the new *GALACTICOMM BREAKTHROUGH*, a one-slot card with up to 16 300/1200 modems on it. Internal. Complete. Reliable. Profitable.

Call (305) 922-3901 with a modem for a free hands-on demonstration. Or call Tim Stryker at the number below for a list of customers in your area. Or send us a diskette, and we'll send it back to you with our demo software package on it. Or send in \$59 for The Major BBS software (Fla. orders add 5% tax). Opportunity knocks. Do it now.



GALACTICOMM, Inc., 11360 Tara Drive, Plantation, FL 33325 (305) 472-9560

A BREAKTHROUGH of Major Proportions...

The Major BBS

A Bulletin Board System for up to 64 simultaneous users. The Major BBS uses the GALACTICOMM BREAKTHROUGH hardware package, a family of multiple modem cards for the IBM PC, XT, AT, and compatibles. You can operate your own multi-user BBS, from your home or business, with features like:

Multi-User Teleconferencing

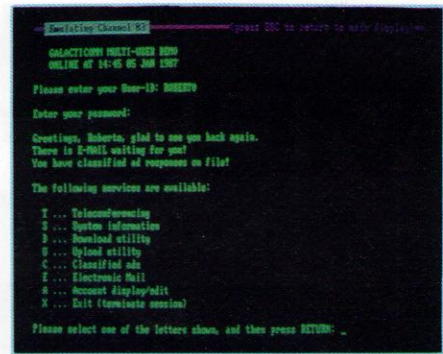
"Simulated CB radio" with 65535 different channels to choose from. Talk to others online, in real time. Any number of people may join a single channel. Transcript output format — makes clear who said what, and in what order. "Page" other users elsewhere on the system, "scan" channels for activity, "unlist" and "nopcode" yourself for greater privacy, more!

Multi-User Electronic Mail

Post a message to another user, or to ALL (the public message area). BBS automatically notifies recipient, next time he or she logs on. Each message is tagged with creation date, who wrote it, who it's for, and a topic field. Topics may be browsed without reading the message texts. Message editing capability, automatic deletion of stale messages, more!

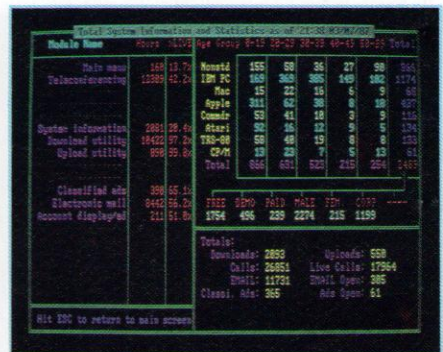
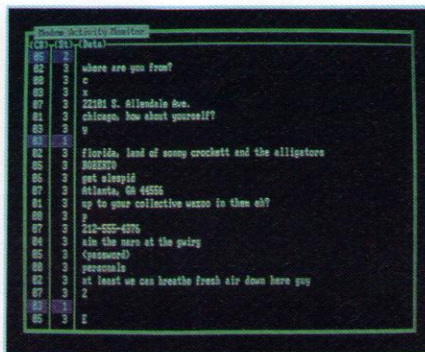
Multi-User Etc. Etc. Etc.

Users can upload and download files using XMODEM protocol. Classified ad service automatically scans the ad database for a topic of interest. System Information module informs users of SysOp policies, where to call or send money, and who is online at the moment. User account-edit module provides User-ID data display, credit transfer capability, more!



SysOp Power Console

The Major BBS System Operator capabilities are simply awesome. Soft-key command sequences allow you to send or broadcast bulletins, post "live" account credits, set system log-on message, "kill" users, modems, more! Main screen shows overall system status: modems in use, an Audit Trail of finance-related activity, a history of recent console commands, time and date, and up to three SysOp-selectable system variables. Other screens show "emulation" mode, account details, modem activity, and system statistics. No room to do it justice here . . .



Order a copy of The Major BBS today for only \$59.00! This artificially low price is only possible because we supply the modem hardware too. Includes C source code, and a 175-page book with technical appendices.

Yes! Send me a copy of
THE MAJOR BBS!

(Florida orders add \$2.95 tax.)

\$59.00 check enclosed

\$67.30 for C.O.D.

\$65.15 for credit card:

VISA MC AMEX _____ Exp. Date _____

Signature

Name _____

Company _____

Address _____

City _____ State _____ Zip _____



GALACTICOMM, Inc., 11360 Tara Drive, Plantation, FL 33325 (305) 472-9560

How To Support Your Customers

You can provide software updates, answer technical questions, and offer reams of product information to anyone with a modem. 24 hours a day, 7 days a week, **unattended**.

All you need is a PC, XT, AT, or 386-compatible, and a Galacticom multi-user hardware/software package. And some phone lines.

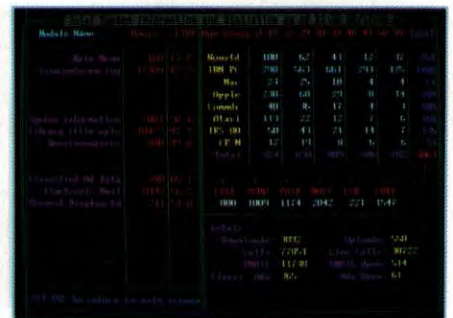
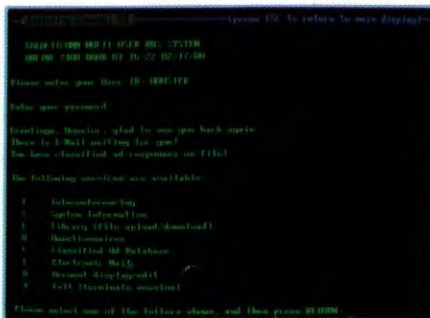
Our multi-user Bulletin Board System software, called **The Major BBS™**, supports your customers in several ways:

- Public Posting Areas technical dialogue, bulletins, Q&A listings
- Private E-Mail for one-on-one customer support
- Teleconferencing online "seminars" and real-time interaction
- File Upload/Download distribute updates, P.R. info, "app notes"
- Questionnaires for market research, order forms, etc.



Our multi-modem PC cards are available in several configurations: 2 to 8 modems per card at 2400 baud, or 2 to 16 modems per card at 1200 baud. These are true single-slot cards with the modems built right in — no additional serial ports, power supplies, or external boxes of any kind are required.

The Major BBS can support **up to 64 users** simultaneously, although most of our customers operate small 4- to 16-user systems. The C source code is also available, so that you can modify the system to suit your specific requirements.



For \$59, we'll send you an introductory copy of *The Major BBS*, suitable for use with your standard COM1 and/or COM2 modems. This is a fully functional version for up to 2 simultaneous users (3 if you count the SysOp). You can upgrade later to a fully supported 4, 8, 16, 32, or 64-user version for only \$300 per doubling (plus modem hardware of course!).

Yes! Send me a copy of THE MAJOR BBS!

Name _____

Company _____

Address _____

City _____ State _____ Zip _____

Signature _____

(Florida orders add \$3.54 tax. Overseas orders add U.S. \$25 for shipping.)

\$59.00 check enclosed

\$67.30 for C.O.D.

\$65.15 for credit card:

VISA MC AMEX / _____

Exp. Date _____

GALACTICOMM

Galacticom, Inc. 4101 S.W. 47 Ave.
Suite 101, Fort Lauderdale, FL 33314

Modem: (305) 583-7808
Fax: (305) 583-7846
Voice: (305) 583-5990

HARDWARE SPECIFICATIONS

	Model 4	Model 16	Model 2408
Maximum # of modems per card ...	4	16	8
Baud rates (auto-selecting)	3/1200	3/1200	3/12/2400
Length	5-3/16"	13-1/8"	13-1/8"
Height	4-3/16"	4-3/16"	4-3/16"
Thickness	3/4"	3/4"	3/4"
+5V max current (per modem)	250 mA	250 mA	190 mA
-5V max current (per modem)	-25 mA	-25 mA	-20 mA
R/W access time	250 ns	250 ns	150 ns
Maximum PC/AT-style speed	16 MHz	16 MHz	(no limit)
Maximum PC/XT-style speed	12 MHz	12 MHz	(no limit)
Maximum "zero-wait-state" speed ..	10 MHz	10 MHz	(no limit)
Operating temperature	0° to 50° C	0° to 50° C	0° to 50° C
Storage temperature	-25° to 85° C	-25° to 85° C	-25° to 85° C
Telephone line interface (each)	RJ-11 (male)	RJ-11 (male)	RJ-11 (male)
AC Impedance	600 ohms	600 ohms	600 ohms
Protection	FCC Part 68	FCC Part 68	FCC Part 68
Transmit Level	-9 dBm (max)	-9 dBm (max)	-9 dBm (max)
Carrier Detect Sensitivity (on)	-43 dBm (min)	-43 dBm (min)	-45 dBm (nom)
Carrier Detect Sensitivity (off)	-48 dBm (min)	-48 dBm (min)	-48 dBm (nom)
DAA Loop Current	20 mA (min)	20 mA (min)	20 mA (min)
300 bps protocol	Bell 103A	Bell 103A	103A / V.21
1200 bps protocol	Bell 212A	Bell 212A	212A / V.22
2400 bps protocol	—	—	V.22 bis
# of I/O ports (10-bit decode)	2	2	1
# of I/O ports (16-bit decode)	8	32	64
I/O addr DIP switch select range	200H to 3FEH	200H to 3FEH	200H to 3FFH
Type of I/O slot accepted	8/16/32	8-bit only	8 or 16-bit
Port interface model	8251A UART	8251A UART	SCC2698
Command set supported	XECOM 1201	XECOM 1201	Hayes

BBS SOFTWARE SPECIFICATIONS

RAM requirement	512K (640K if more than 16 users)
Extended/expanded RAM requirement ..	none
Hard disk requirement	20MB (minimum)
Operating system requirement	MS-DOS/PC-DOS 3.0, 3.1, 3.2, 3.3, and up
LAN compatibility (none required)	Novell, Corvus, 10-Net
C source compatibility	Turbo 1.5, Microsoft 4.0/5.0, Lattice 2.14
Btrieve compatibility	V4.01 and up (single-CPU version)
Executable file size	200K without overlays (subject to change)

User Account Management

Max number of user accounts	8,000,000
Selectable database fields	screen width, name, company, address (2 lines), phone no., system type, age, sex
Maximum User-ID length	9 characters
Maximum password length	9 characters
Max user-time "meterable"	2 billion seconds (63 years)

SIGs (Special Interest Groups)

Max # of SIGs	200
SIG user main menu options	Read/write bulletins, upload/download files, teleconference, select another SIG
Search strategies supported	keyword search, scan, title list
Security levels (per user per SIG) ..	invisible, read, download, write, upload, Co-Op, SIG-Op, SYSOP
"Quicksan" SIGs (per user)	20
Message threading	forward or backward, by topic
Tags maintained per message	message no., date, time, reply count, "reply-to", "forwarded-by", "cc:-of"
Max message topic length	40 bytes (plus 32 byte aux. topic)
Max message text length	1920 bytes
Max file size	up to size of disk
Max # of messages + files at once ..	2,000,000
Max # of messages + files ever	4 billion
Upload/download protocols	XMODEM, XMODEM-CRC, YMODEM, ASCII (paginated or non-stop)
Special features	novice/expert modes, CD-ROM compatible, context-sensitive help, keyword memory

Electronic Mail

E-Mail main menu options	Read/write/modify/erase messages
Tags maintained per message	message no., date, time, RRR, ATT, "reply-to", "forwarded-by", "cc:-of"
Maximum message topic length	40 bytes (plus 32 byte aux. topic)
Maximum message text length	1920 bytes
Maximum "attachment" file size ...	up to size of disk
Upload/download protocols	XMODEM, XMODEM-CRC, YMODEM, ASCII (paginated or non-stop)
Special features	carbon copies, forwarding, auto-purge, 2-way auto-alert, return-receipts

Teleconference

Number of "CB" channels	65,535
Max length of user input line	255 bytes (plus CR)
User screen display format	transcript
Max concurrent users/channel	64
Special features	"chat", "page", "whisper", activity-scan, list/unlist, moderators, "squelch"

Questionnaires

Max no. of questionnaires	10
Max no. of questions in each	20
Max length of each question	1920 bytes
Max length per answer	127 bytes
Special features	results display option, offline report generator with duplicate elimination

User Registry

Max no. of registered users	4,000,000
Max no. of fields per user	30
Max overall storage per user	870 bytes
Default templates supplied	Resumé, Business Interests, Dating Game
Special features	directory scan, detailed lookup, auto-alert if not registered, profanity filter

The Major BBS is a trademark of Galacticom, Inc.
 PC, XT, AT, and PC-DOS are trademarks of International Business Machines Corp.
 Hayes is a registered trademark of Digital Communications Associates, Inc.
 XECOM is a trademark of XECOM, Inc.
 Novell is a trademark of Novell, Inc.
 Corvus is a trademark of Corvus Systems, Inc.
 10-Net is a registered trademark of Digital Communications Associates, Inc.
 Turbo C is a trademark of Borland International, Inc.
 Microsoft C and MS-DOS are trademarks of Microsoft Corp.
 Lattice C is a trademark of Lattice, Inc.
 Btrieve is a trademark of Softcraft, Inc.

ALL SPECIFICATIONS SUBJECT TO CHANGE WITHOUT NOTICE